

ROOM LAYOUT



**TWO BEDROOMS**  
**TYPE A1**  
**74.00 - 74.50 sq.m**

ROOM LAYOUT



**TWO BEDROOMS**  
**TYPE A2**  
**69.00 sq.m**

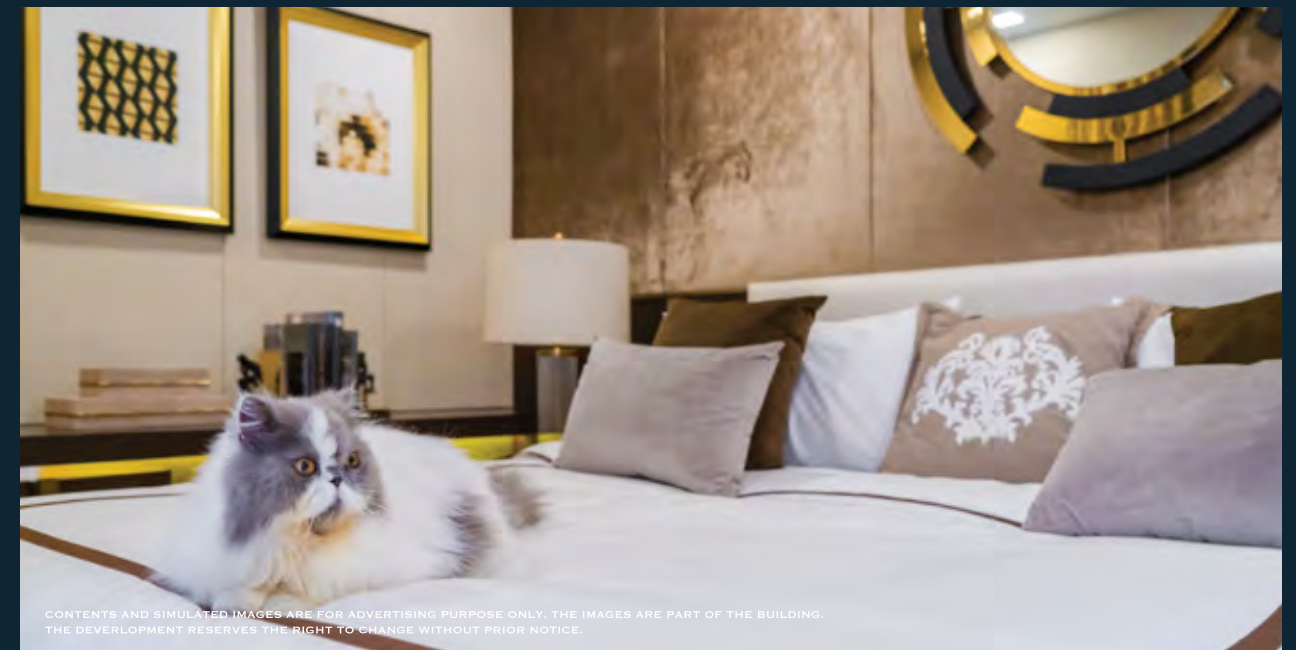
ROOM LAYOUT



TWO BEDROOMS  
TYPE D  
92.00 SQ.M



CONTENTS AND SIMULATED IMAGES ARE FOR ADVERTISING PURPOSE ONLY. THE IMAGES ARE PART OF THE BUILDING. THE DEVELOPMENT RESERVES THE RIGHT TO CHANGE WITHOUT PRIOR NOTICE.



CONTENTS AND SIMULATED IMAGES ARE FOR ADVERTISING PURPOSE ONLY. THE IMAGES ARE PART OF THE BUILDING. THE DEVELOPMENT RESERVES THE RIGHT TO CHANGE WITHOUT PRIOR NOTICE.

SIMPLEX AND DUPLEX LAYOUTS  
ARE BEAUTIFULLY DESIGNED TO CREATE  
'FEEL RIGHT AT HOME' ATMOSPHERE



ROOM LAYOUT



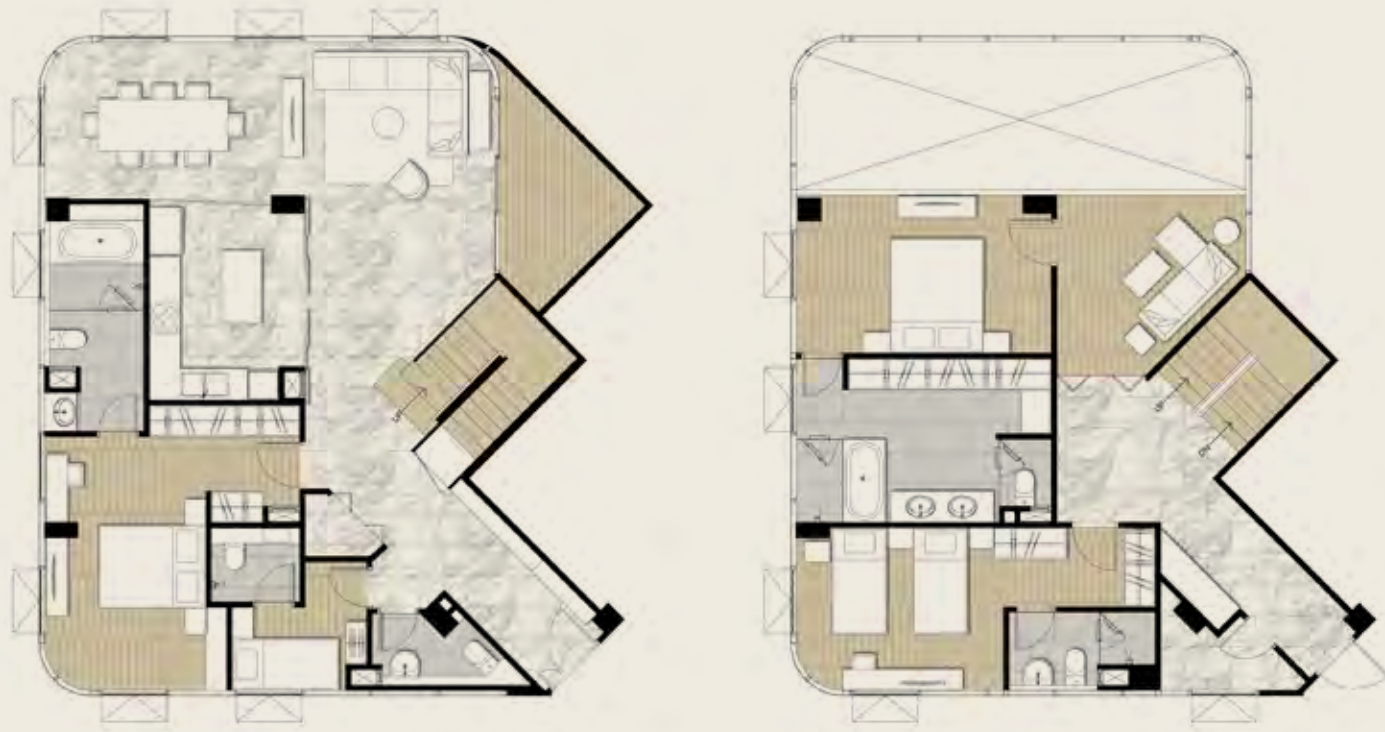
**DUPLEX THREE BEDROOMS**  
**TYPE A1**  
**7<sup>TH</sup>- 8<sup>TH</sup> FLOOR**  
**124.50 - 125.50 SQ.M**

ROOM LAYOUT



**DUPLEX TWO BEDROOMS**  
**TYPE B2**  
**7<sup>TH</sup>-8<sup>TH</sup> FLOOR**  
**125.00 SQ.M**

ROOM LAYOUT



DUPLEX THREE BEDROOMS  
TYPE C  
7<sup>TH</sup>-8<sup>TH</sup> FLOOR  
204.00 SQ.M

ROOM LAYOUT



DUPLEX THREE BEDROOMS  
TYPE D-A  
7<sup>TH</sup>-8<sup>TH</sup> FLOOR  
158.50 SQ.M